



# Why OSU's Entomology?

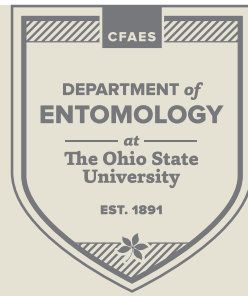
Prominent experts, research, and global relationships enable OSU's Entomology Department to offer four tracks for entomology majors:

*Sustainable Insect Management*  
*Insects in Human & Veterinary Medicine*  
*Insect Ecology and Conservation*  
*Individualized Insect Studies*

## 1 to 1

**Ratio of Students to  
Faculty & Support Staff**

A smaller department connection  
with abundant larger resources



## INTERNSHIPS

Customizable and counting as research or independent study credits with faculty or through non-profits, agencies, private businesses, and firms.

## FACULTY LABS

Engaging in basic and applied research, contributing to outreach and engagement, and providing information to agricultural and industry groups throughout the world.

## STONE LAB

Offering field courses at Lake Erie's *Island Campus* for high school students and undergraduates.

## MUSEUM OF BIOLOGICAL DIVERSITY

Providing hands-on experience, including the *C.A. Triplehorn Insect Collection*, ranked a top university collection in N. America.

[ENTOMOLOGY.OSU.EDU](http://ENTOMOLOGY.OSU.EDU)